



**GLYPTIC**TM
Time Will Change Tomorrow



LEADERS IN PERCEPTUAL

Extra Low Voltage Fire Alarm, Detection & Protection, Security Surveillance, Comfort & Control System in Building Technology Platform



GLYPTIC is the
one-point
Destination for
the solution of all
your ELV System
requirements



End to end solution for various Buildings



Fire Detection
System



Access Control
System



CCTV System



Building
Management
System



Home
Automation
System



Fire Protection
& Sprinkler
System



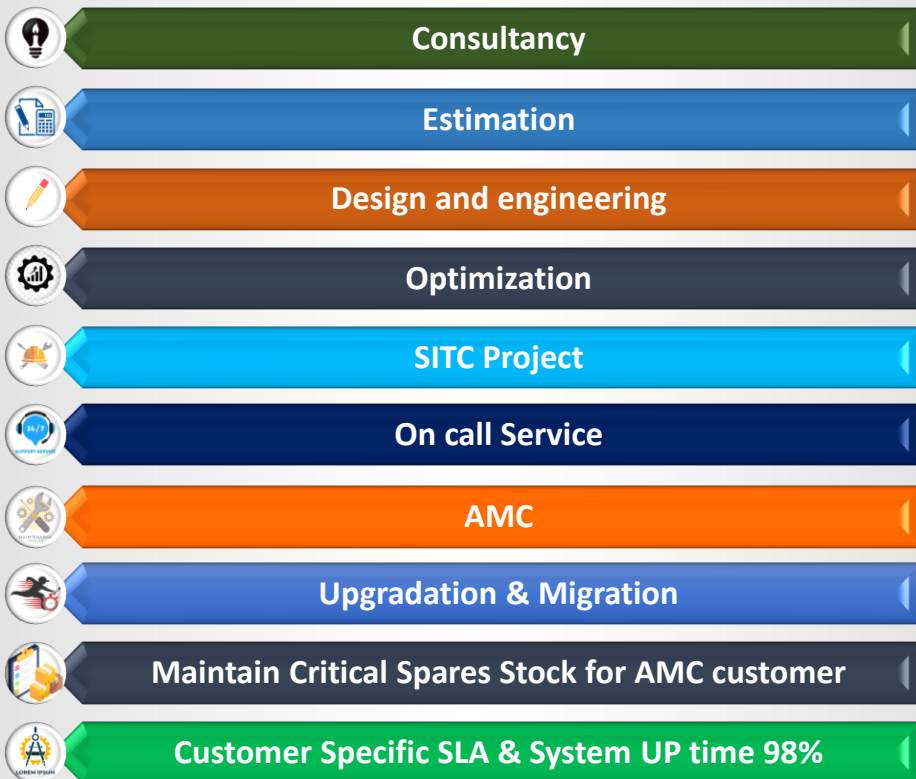
FIRE

ACTIVATED

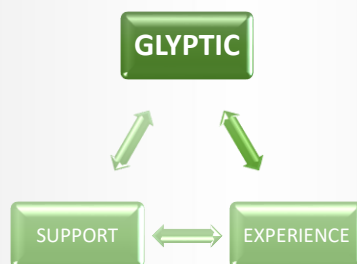
PUSH IN
PULL DOWN

“

Glyptic promise to provide ultimate service support to you that even more than expected by customer with Expertise, Experience, Dedications and commitments.”



Glyptic is one of very few System Integrator capable to provide highest level of Service to you irrespective of Make & Models of Fire Alarm System installed at various Facilities.



SIEMENS

EST

**SCHRACK
SECONET**

SECURITON

tna
TECHNOLOGY

Kidde

Simplex

AUTRONICA

**HOGAR
CONTROLS**

**AUTHORISED CHANNEL PARTNER OF
GLOBAL LEADER AS OEM**

**GLYPTIC ASSOCIATED WITH OTHER
OEM FOR SERVICE, SUPPORT & SUPPLY**

**SYSTEM
SENSOR**

BOSCH

Hanwha

**AXIS
COMMUNICATIONS**

MATRIX

Ravel

**COOPER Safety
Fire Systems**

**NOTIFIER
FIRE SYSTEMS**

HIKVISION

**ESSER
by Honeywell**

**MORLEY IAS
FIRE SYSTEMS**

apollo
MULTI CLASS FIRE SOLUTIONS

**MORETHAT'S IN CUSTOMER MIND
CUSTOMER...NOT SHOWN IN THE LIST**

FIRE

PUSH IN

Call us
+91 7020035493
+91 9836838438
glyptic.sales@gmail.com



**PROJECT : MES COMMAND
HOSPITAL UDHAMPUR**
**CUSTOMER: VIJETA PROJECTS AND
INFRASTRUCTURES LTD.**

Executed Value : 416 LACS

Systems brief: Supply, Supervision,
Testing & Commissioning of Fire
Detection (15 FAP & 5000+ detectors)
& Protection System 600 bedded
hospital.

We successfully completed.....

**PROJECT :FIRE DETECTION AND
ALARM SYSTEM PROJECT FOR
NTPC PLANT**
CUSTOMER: BHEL

Executed Value : 274 LACS

Systems brief: Supply, Supervision,
Testing & Commissioning of Fire
Detection (21 FAP & 4500
Detectors) at 7 plants at NTPC.

We successfully completed.....



**PROJECT :FIRE DETECTION AND
ALARM SYSTEM GAIL PIPELINE
PROJECT.**
CUSTOMER: GAIL

Executed Value : 173 LACS

Systems brief: Supply, Supervision,
Testing & Commissioning of Fire
Detection (18 FAP & 500+
detectors) 18 different stations for
GAIL Pipeline Project.

We successfully completed.....





PROJECT : FIRE DETECTION AND PROTECTION SYSTEM FOR HIMADRI CHEMICAL PLANT AT SINGUR

Executed Value : 154 LACS

Systems brief: Supply, Supervision, Testing & Commissioning of Fire Detection & Protection System Himadri. We did 3 kms piping work and 20 Nos. deluge valve.

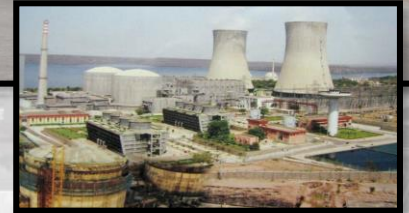
We successfully completed.....

PROJECT : FIRE DETECTION AND ALARM SYSTEM FOR NUCLEAR POWER PLANT(NFC) KOTA.

Executed Value : 216 LACS

Systems brief: Supply, Testing & Commissioning of Fire Detection at nuclear power plant. We installed 200+ beam detector at the location.

We successfully completed.....



PROJECT : FIRE SUPPRESSION SYSTEM FOR VARIOUS CONTROL ROOM OF POWERGRID.

Executed Value : 115 LACS

Systems brief: Supply, Testing & Commissioning of fire suppression system at 11 different locations. We installed 2 ton Novec1230, with 22 cylinders.

We successfully completed.....





PROJECT : FDA SYSTEM OF 2x210 MW IB THERMAL POWER PLANT

CUSTOMER: OPGC

Executed Value : 107 LACS

Systems brief: It is our biggest upgradation work. We successfully completed upgradation of 1700+ detectors and 3 FAP along with Graphics.

We successfully completed.....

PROJECT : FDA SYSTEM AT KOLKATA TERMINAL BASEMENT AREA

CUSTOMER: AIRPORT AUTHORITY OF INDIA

Executed Value : 90 LACS

Systems brief: Supply, Testing & Commissioning of Fire Detection(1700+ detectors and 1 FAP along with Graphics). at AAI Kolkata.



We successfully completed.....



PROJECT : FDA SYSTEM AT KOLKATA HIGH COURT .

Executed Value : 75 LACS

Systems brief: Supply, Testing & Commissioning of FDA system (1200+ detectors, 4 VESDA and 3 FAP along with Graphics).

We successfully completed.....



**PROJECT : FDA SYSTEM NHDC
HYDAL POWER PLANT**

Executed Value : 68 LACS

Systems brief: Upgradation,
Testing & Commissioning of Fire
Detection(500+ detectors ,1 FAP
and 7 kms LHS along with
Graphics).

We successfully completed.....

**PROJECT : FDA SYSTEM &
PROTECTION AT TORRENT
PHARMA**

Executed Value : 35 LACS

Systems brief: Supply, Testing &
Commissioning of Fire Detection
and Foam Protection for Tanks.

We successfully completed.....



**PROJECT : FIRE DETECTION AND
PROTECTION SYSTEM AT
SCIENCE CITY**

Executed Value : 32 LACS

Systems brief: Supply, Testing &
Commissioning of Fire
Detection and Fire hydrant with
sprinkler system.



We successfully completed.....



**PROJECT : FDA SYSTEM
ULTRATECH CEMENT PLANT
(RAWAN, HIRMI, CHITTOOR,
DHAR, ANDHRA PRADESH)**

Executed Value : 165 LACS

Systems brief: Fire detection and alarm system for their 5 different location plant (28 FAP, 900+ detectors, 35 beam detector, 5 kms LHS).

We successfully completed.....

**PROJECT : FIRE DETECTION AND
ALARM BARDHAMAN MEDICAL
COLLEGE**

Executed Value : 58 LACS

Systems brief: Supply, Testing & Commissioning of Fire Detection (5 FAP, 1400+ detectors).

We successfully completed.....



**PROJECT : FDA AT IMAMBARA
HOSPITAL.**

Executed Value : 47 LACS

Systems brief: Supply, Testing & Commissioning of FDA system (1 FAP, 500+ detectors)

We successfully completed.....





PROJECT : FIRE PROTECTION SYSTEM AT NANDAN

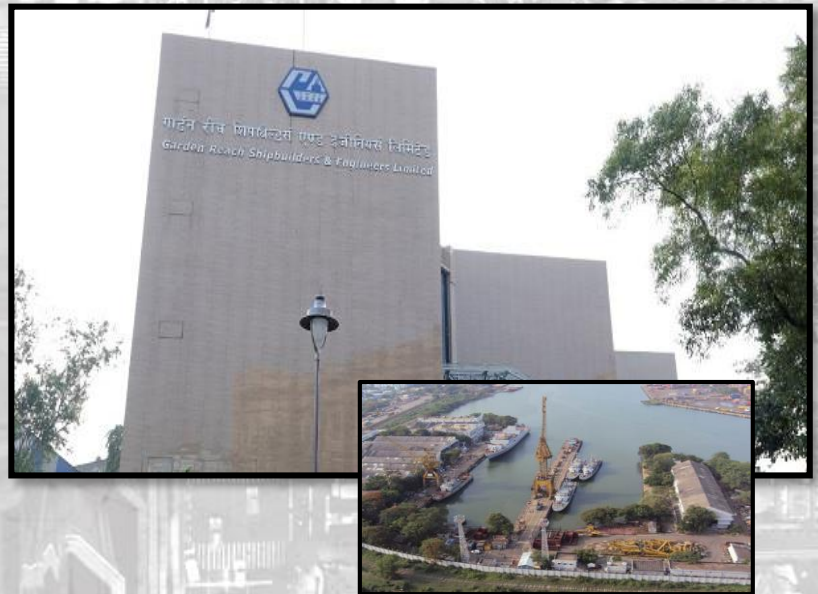
Executed Value : 28 LACS
Systems brief: Sprinkler and fire hydrant work.

We successfully completed.....

PROJECT : FIRE DETECTION & PROTECTION SYSTEM AT GRSE

Executed Value : 28 LACS
Systems brief: Supply, Testing & Commissioning of Fire Detection and Novec1230

We successfully completed.....



PROJECT : FDA , FPS, BMS AT MANI GROUP

Executed Value : 150 LACS
Systems brief: Supply, & Commissioning of FDA, BMS job for MANI IMPERIAL, SWARNA MANI, MANI CASADONA, MANI SQUIRE and IQ CITY.

We successfully completed.....





**PROJECT : FDA SYSTEM AT
BAKRESWAR THERMAL
POWERPLANT, WBPDC**

Executed Value : 80 LACS

Systems brief: our biggest FDA migration work, where we have migrated 12 FAP and 2500+ Detectors.

We successfully completed.....

**PROJECT : AEROSOL BASED FIRE
SUPPRESSION SYSTEM AT
HINDALCO, LAPANGA.**

Executed Value : 72 LACS

Systems brief: Fire Suppression work for their CHP Electrical room at with Aerosol suppression system.

We successfully completed.....



**PROJECT : FDA SYSTEM AT
VARIOUS NTPC PLANTS.**

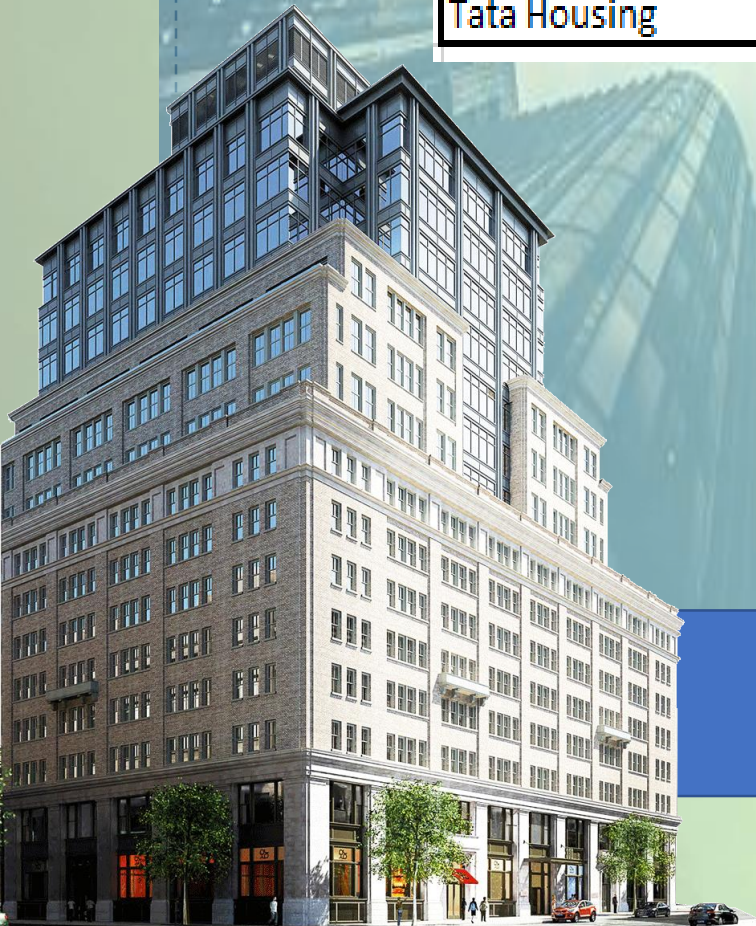
Executed Value : 210 LACS

Systems brief: Supply, & Commissioning of FDA at NTPC SIPAT, NTPC KHELGAON and NTPC BONGAIGAON.

We successfully completed.....



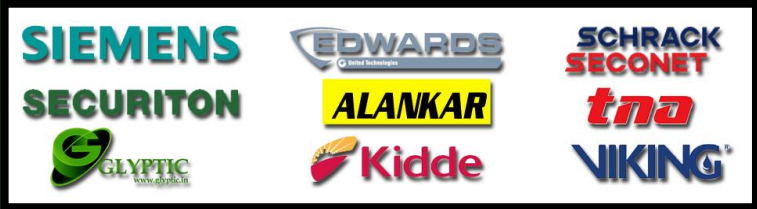
Builder / Customer	Buildings / Facility	Systems
Surekha Group	Urbana	FDA
Surekha Group	Elita Garden Vista	IP-CCTV
Surekha Group	Globsyn Cristal	BMS
Mani Group	Mani Mall	BMS & PA
Mani Group	Casadona	FDA & PA
Mani Group	Imperial	FDA
Mani Group	Swarna Mani	FDA
Siddha Group	Siddha Pines	FDA & PA
Siddha Group	Westin	FDA & PA
Siddha Group	Galaxia	FDA & PA
Bengal Peerless	Axis Mall	FDA
Bengal Peerless	Avidipta -I	FDA & PA
Infinity Group	Godrej Water Side	FDA & PA
Merlin Group	Merlin Tower	BMS
Avani Group	Avani Mall	FDA
Emami Group	Emami City	FDA & PA
Tata Housing	Eden Court	CCTV & VDP



**Good Experiences in
Residential Buildings**



We are the distributor of World class brands



- ✓ Wide Range of Products
- ✓ Customer Support
- ✓ Fast Delivery



Fire Detection System



Aspiration Detection System



Fire Suppression System



Fire Protection System



Access Control System



LHS Cables

INTRODUCING

Glyptic GL-120 Addressable Fire Alarm Panel – upto 120 points



- EN54 Standard
- Auxiliary output 24V.
- Conventional supervised siren output.
- It allows to separate the installation in detection and alarm zones.
- Supervised loop.
- Device isolation function.
- Operation and configuration are regulated by the access levels with passwords.
- Explosion-proof and over voltage protection.
- Short circuit protection.
- Two 12V batteries.

Glyptic GL-400 Addressable Fire Alarm Panel – upto 400 points



- EN54 Standard
- Using RISC embedded CPU technology based on ARM platform and real-time preemption multi-task
- reliable and stable operation.
- 2 loop bus, Max. 2*200 alarm/linkage address points.
- 8 sets of programmable active control outputs.
- Using color English LCD display, display content is clear and intuitive
- Have strong field programming ability
- kinds of English information annotation, bus control equipment and multi-line control equipment mutual
- Linkage can be set by field programming, can also use PC or notebook way for field programming.
- With black box function, it can store 3000 fire alarm history records, 3000 linkage history records, and 3000

Addressable Smoke/ Heat Detectors



- | | |
|----------------------------------|---------------------------------|
| Operating Voltage: | DC 20~30V |
| Standby Current: | ≤400uA |
| Alarm Current : | ≤2mA |
| Temp. Trip Point : | 57 +/-3 °C |
| Indicator LED of Standby: | Green LED flash every 3 seconds |
| Indicator LED of Alarm: | Red LED Light on |
| Network topology: | Addressable |
| Range of Address: | 1~120 |
| Operation Temperature: | -10°C~+50°C |
| Environment Humidity : | 95% RH (no condensation) |
| Net Weight : | 116g |
| Color : | White |
| Material : | ABS |

Glyptic Loop Power Hooter cum Strobe



- | | |
|---------------------------------------|---------------------------------|
| Operating Voltage: | DC 20~30V |
| Flash intensity: | >1.2ws, flash period 2hz |
| Audio alarm: | 90dB@1m |
| Standby current : | ≤400uA @24VDC |
| Alarm Current : | ≤40mA @24VDC |
| Indicator LED of Standby: | Green LED flash every 3 seconds |
| Maximum quantity of equipment: | 20 |
| Programming: | electronically addressed |
| Range of Address: | 1~120 |
| Connection: | Two wires, non-polarity |
| Sound alarm type: | Police, Car Sound |
| Temperature range: | -10°C~+50°C |
| Humidity range: | 95% RH (no condensation) |
| Size: | 134L X 115W X 48H mm |

Glyptic Addressable I/O Module



- | | |
|----------------------------------|--------------------------|
| Operating Voltage: | DC 20~30V |
| Standby Current: | ≤400uA @24VDC |
| Alarm Current : | ≤3mA @24VDC |
| Contact Capacity: | 2 A @ 30 V - 1 A @ 125V |
| Indicator LED of Standby: | Red LED flash |
| Indicator LED of Alarm: | Red LED Light on |
| Connection: | Two wires, non-polarity |
| Range of Address: | 1~120 |
| Operation Temperature: | -10°C~+50°C |
| Environment Humidity : | 95% RH (no condensation) |
| Net Weight : | 96g |
| Color : | White |
| Material : | ABS |

Glyptic Addressable Manual Call Point



- | | |
|----------------------------------|---------------------------------|
| Operating Voltage: | DC 20~30V |
| Standby Current: | ≤400uA @24VDC |
| Alarm Current : | ≤2mA @24VDC |
| Indicator LED of Standby: | Green LED flash every 3 seconds |
| Indicator LED of Alarm: | Red LED Light on |
| Range of Address: | 1~120 |
| Connection: | Two wires, non-polarity |
| Operation Temperature: | -10°C~+50°C |
| Environment Humidity : | 95% RH (no condensation) |
| Net Weight : | 85g |
| Color : | Red |
| Material : | ABS |

Conventional Smoke detector



- SMT adopted, high stability
- Low standby current
- Anti-RFI& anti-EMI
- 9~35Vdc or 40~60Vdc wide voltage
- Dual led for 360 visual
- Flashing led power indicator
- 2wires or 4 wires optional
- 1. Operating voltage : DC : 9V~35V (orders : DC40~60V)
- 2. Standby current : ≤55uA
- 3. Alarm current: ≤55mA@DC24V; ≤25mA@DC12V
- 4. Alarm indication: red LED
- 5. Reset: power off or auto reset
- 6. Operating temperature: -10°C +50°C
- 7. Operating humidity: ≤95 RH
- 8. Alarm output: Remote led for 2 wires; relay output for 4 wires

Conventional Manual Pull Station



- EN54 Standard
- Using RISC embedded CPU technology based on ARM platform and real-time preemption multi-task
- reliable and stable operation.
- 2 loop bus, Max. 2*200 alarm/linkage address points.
- 8 sets of programmable active control outputs.
- Using color English LCD display, display content is clear and intuitive
- Have strong field programming ability
- kinds of English information annotation, bus control equipment and multi-line control equipment mutual
- linkage can be set by field programming, can also use PC or notebook way for field programming.
- With black box function, it can store 3000 fire alarm history records, 3000 linkage history records, and 3000

Conventional Beam Detector



- EN54-12 Certified
- Hassle free alignment, built with digital guide display and laser beam pointing
- Employ single-ended design through reflective mirror
- Four ranges wide monitoring from 8-100 meters via encoder
- Three users programing sensitivity adjustment
- Built-in microprocessor
- Self-diagnosis function can monitor for internal faults
- Automatic compensation for factors weakening received signals, such as dust contamination, positional movement and ageing of the transmitter
- Fire and Fault interfacng relays
- Attractive and pleasing appearance
- Real User friendly alignment method

Conventional Manual Call Point



Break glass (which draws its name from breaking the glass to pull a fire alarm) refers to a quick means for a person who does not have access privileges to certain information to gain access when necessary.

- SPECIFICATION:**
- Glass push button panel, can't reset, with LED indicator
 - LED indicator, green for working, red for alarm
 - Operation voltage: 24VDC
 - Max. Current: 1A at 24VDC
 - Contact resistance: ≤0.2ohm
- Working conditions:**
- Temp. range: -10°C~+50°C
 - Max. relative humidity: ≤93RH±2%

ENQUIRE NOW

Call us
+91 7020035493
+91 9836838438
glyptic.sales@gmail.com



Siemens FC901- Addressable Fire Alarm Panel – 50 Points

50-Point Addressable System Enclosure

The Model FH901-U3 / R3 enclosure for the 50-point addressable fire system, Model FC901, supports all system modules. The enclosure also supports up to 12AH batteries.

The fire-system displays (FSD901-U3 / R3) are remote LED / LCD units that show the existing status of the Model FC901 FACP. The Model FSD901-U3 / R3 optional display supports the following LEDs for system-status conditions:

- Power
- Alarm
- Trouble
- Supervisory
- Ground-Fault

There are also LEDs to indicate when audible circuits are 'active' or 'silenced.' The main board supports four (4) system-control buttons, including: Acknowledge; Alarm Silence; Unsilenced, and Reset.



Siemens FC922- Addressable Fire Alarm Panel – 252/504 Points

The Cerberus PRO 252-point (Model FC922) / 504-point (Model FC924) addressable FACP is designed to meet the fire-protection needs of mid-size buildings. This advanced FACP offers features typically required in mid-size buildings in a package that is easy to install and competitively priced. Additionally, Models FC922 and FC924 are networkable, allowing the systems to fulfill the growing fire-protection needs of the building. The programming software for the 252/ 504-point fire systems is held in flash electrically erasable programmable read-only memory (EEPROM).

The Remote Display Terminals (Models FT2014-U3 / R3and FT2015-U3 / R3) are remote annunciators that's how the existing status of Models FC922 / FC924. The remote display terminals (Models FT2014-U3/R3 and FT2015-U3/R3) are remote annunciators which can be configured as global displays, and indicate real-time system status.

The Graphics Input / Output (I/O) Driver (ModelFT2003- U1) is a fire-system accessory on the RS-485(Model FCA2016-U1) interface circuit. Model FT2003-U1, which serves as a combination standalone remote display / operating unit, provides the ability to build a graphic annunciator for the Desigo Fire Safety 252 /504-point addressable FACPs.



Siemens Modular- Addressable Fire Alarm Panel – upto 2500 Points

Siemens Smart Infrastructure – Building Products –> usa.siemens.com/fire System Components A basic Cerberus PRO Modular fire-alarm control panel (FACP) consists of one (1) of the following parts: Operator Interface; power supply (PSC-12); Class X Device Loop Card (XDLC); Zone Indicating Card (ZIC-4A); five-slot card cage (CC-5); Inner Door Blank Single Plate (ID-SP), and a CAB1, CAB2 or CAB3 system enclosures.

FCM2041-U3 –> Operator Interface, ZIC-8B –> Zone Indicating Card (with Model ZIC-2C) XDLC –> Device Loop Card, NIC-C –> Network Interface Card, PSC-12 –> Power Supply Charger Module, DACT –> Digital Alarm Communications, CC-5 / CC-2 –> Card Cages, SSD Series –> System Status Display, XDMC –> Digital Message Card, TZC-8B –> Firefighters' Telephone Zone Card, DAC-NET –> Digital Audio Card, ZAC-40 –> Zone Amplifier Card (40 Watt)

Edwards IO Series- Addressable Fire Alarm Panel – 64/ upto 1000 Points

- Auto-programming speeds installation time
- Supports Signature Series intelligent modules and detectors
- Form C contacts for alarm and trouble, Form A for supervisory
- Electronic addressing with automatic device mapping
- Optional Ethernet port for diagnostics, programming and a variety of system reports
- Two programmable switches with LEDs and custom labeling
- Class B or Class A wiring
- Ground fault detection by module
- Supports up to eight serial annunciators, (LCD, LED-only, and graphic interface)
- Can use existing wiring for most retrofit applications
- Upload/download remotely or locally
- Two-level maintenance alert reporting
- Pre-alarm and alarm verification by point
- Adjustable detector sensitivity
- 4 x 20 character backlit LCD display
- Optional earthquake hardening: seismic Importance Factor 1.5
- Standalone operation



Edwards EST3X- Addressable Fire Alarm Panel – upto 6 loops

- Up to six intelligent analog loops hosting as many as 1,500 Signature Series devices per panel
- Optional integrated eight-channel digital audio
- 10 amp power supply with universal 94 to 264 Vac input voltage
- Patented Voltage Boost™ technology delivers consistent voltage – even at low battery power
- Four built-in 3-amp notification/auxiliary circuits
- Large 24-line by 40-character backlit LCD
- Simplified operation with the SpeedTouch™ rotary control
- 65 amp hour battery charger
- Eight- or 64-node network nodes using copper and/or fiber
- Supports up to 30 R-Series remote annunciators
- Removable terminals on all low voltage wiring
- Space for up to three additional option cards such as extra SILC loops, amplifiers, or dialer/modem
- Optional Ethernet interface
- 1,100 event history log



Edwards EST3- Addressable Fire Alarm Panel – upto 10 loops

- Listed for Mass Notification/Emergency Communication, Fire, Security, Access Control, and Emergency Voice Alarm
- 168,960 character / LCD
- Exceptional alarm response times
- Network supports copper, multi-mode fiber, single-mode fiber, or a combination of all three
- Total network wiring over 160,000 feet
- Eight channels of multiplexed digital audio on a single pair of wires or fiber filament
- Zoned, distributed and banked audio amplifier options
- Local, Proprietary, and Central Station system operations
- In retrofit applications, existing wiring may be used if code compliant
- Supports Edwards Signature Series detectors and modules
- Designed in accordance with ISO-9000 quality standards
- UL864 Ninth Edition Listed
- UL2572 Listed for Mass Notification
- Optional earthquake hardening: OSHPD seismic pre-approval for component Importance Factor 1.5



Schrack Evoxx -Addressable Fire Alarm Panel – upto 16 loops

- LED-field for the indication of up to 8 extinguishing zones
- Fully redundant modular control panel with decentralized system construction
- Up to 16 loops per control panel
- Can be networked over copper cable or optic fiber connections
- Event log memory with capacity for up to 65 000 events
- Freely programmable controllers and algorithms
- Option for remote monitoring over the internet
- Integrated LAN interface
- Wireless service interface

- CO2 high and low pressure extinguisher systems with and without a risk of personal injury
- inert gas and argon extinguishing systems with and without a danger to the safety of people
- Spraying water and misting water extinguishing systems
- Sprinkler systems and pre-action sprinkler systems
- Chemical extinguishing systems



Securiton Securifire -Addressable Fire Alarm Panel – upto 16 loops

Securifire 3010A basic version including:

- Sheet steel cabinet (grey)
- DOM-cylinder lock
- BS-MCB15A Central Processor Unit
- BS-PSU power supply unit (110/230 VAC)
- Module rack with BS-BUS backplane
- Battery compartment

Mains voltage / Frequency:

110 / 230 VAC + 10% - 15% 47 - 63 Hz

Power consumption: max. 280 W

Output voltage: 26.3 V DC (min. At +50°C)

Output current: 7.1 A

Protection class (DIN 40050): IP30

Operating temperature: -5°C to +50°C

Weight of basic version: 23.5 kg (without batteries)

Dimensions (HxWxD): 470 x 670 x 230 mm

Cabinet: Sheet steel

Color: light grey (RAL 7035)

Kidde- Aspiration Smoke Detector

- Small to Big, low cost aspirating smoke detector for easy and discreet installation
- High sensitivity provided by laser based forward light scatter for reliable early warning
- Two sampling pipes (100m aggregate) for flexibility
- Unique ClassFire® Perceptive Artificial Intelligence system that dynamically adjusts the detector's operating parameters, allowing for day to day changes in the protected environment and system contamination
- Unwanted alarms from dust are avoided using patented Dual Technology LOD 3DD Laser Dust Discrimination and elimination system
- EN54 Part 20 approved

Securiton- Aspiration Smoke Detector

- Approved according to EN 54-20 classes A, B and C, plus UL and FM VDS-tested calculation software ASD Pipe Flow allows for an efficient asymmetrical pipe layout
- Sensitivity can be set from 0.002–10 %/m
- Highly sensitive yet robust smoke detection thanks to large-volume smoke chamber (LVSC) with measurement resolution < 0.001%/m
- Complete integration into the SecurLine loop including Config over Line insensitive to dirt particles thanks to patented particle suppression
- Automatic soiling compensation and autolearning function
- Low noise level, compliant with ISO 11690-1
- Up to 5 alarm levels per detector (3 pre-signals and 1 or 2 alarms)

ENQUIRE NOW



Call us
+91 7020035493
+91 9836838438
glyptic.sales@gmail.com



Addressable Smoke Detectors

Make: SIEMENS/EDWARDS/SCHRACK/SECURITON/TNA

- Multi-criteria optical smoke sensing technology
- Wide 0.5 to 4.36 %/ft. (1.6 to 13.6 %/m) smoke obscuration
- Uses Existing Wiring
- Integrated nuisance rejection reducing unwanted alarms from general cooking particulates
- Listed to UL 268 7th edition
- Automatic Device Mapping
- Up To 250 Total Signature Addresses Per Loop
- Two Levels of Environmental Compensation
- Two Levels of Dirty Detector Warning
- Twenty Pre-Alarm Settings
- Five Sensitivity Settings
- Non-Volatile Memory
- Electronic Addressing
- Automatic Day/Night Sensitivity Adjustment
- Bicolor (Green/Red) Status LED
- Standard, Relay, Fault Isolator, and Audible Mounting Bases



Addressable Heat Detectors

Make: SIEMENS/EDWARDS/SCHRACK/SECURITON/TNA

- Next Generation Heat Sensing Technology
- 135 °F (57 °C) fixed temperature alarm point (HRD and HFD)
- 15 °F (9 °C) per minute rate-of-rise alarm point (HRD)
- Uses existing wiring
- Automatic device mapping
- Sensor Markings Provide Easy Testing Identification
- Up To 250 Total Signature Devices Per Loop
- Non-volatile memory
- Electronic addressing
- Bicolor (green/red) status LED
- Standard, relay, fault isolator, and audible mounting bases
- 50 foot (15.2 meter) spacing

Hooter cum Strobe



- High Performance LED Strobe Technology
- Ultra low device current consumption
- High efficiency optics
- Selectable 15, 30, or 75 cd light output
- LED devices may be mixed with legacy Xenon strobes
- Efficient Audible Output
- Selectable high or low db horn output
- Selectable temporal or steady horn output
- Improved audio frequency range for better wall penetration
- Low-profile Design
- Compact design... single gang mounting
- Ultra-slim... protrudes about 1" from the mounting surface
- Attractive appearance... no visible mounting screws
- Multiple "FIRE" Marking Options
- Order English, French, Spanish or no FIRE markings
- Change markings at any time with quick-swap covers

Addressable Multi Detectors

Make: SIEMENS/EDWARDS/SCHRACK/SECURITON/TNA



- Multi-criteria optical smoke sensing technology
- Integrates optical smoke with rate-of-rise heat sensing
- Wide 0.5 to 4.36 %/ft. (1.6 to 13.6 %/m) smoke obscuration
- Integrated nuisance rejection reducing unwanted alarms from general cooking particulates
- Uses existing wiring
- Listed to UL 268 7th edition
- Automatic device mapping
- Sensor Markings Provide Easy Testing Identification
- Up To 250 Total Signature Addresses Per Loop
- Two levels of environmental compensation
- Two levels of dirty detector warning
- Twenty pre-alarm settings
- Five sensitivity settings
- Non-volatile memory
- Automatic day/night sensitivity adjustment
- Bicolor (green/red) status LED
- Standard, relay, fault isolator, and audible mounting bases

Manual Call Point



Manual call point is a device which enables personnel to raise an alarm in the event of a fire incident by pressing a frangible element to activate the alarm system. A fire alarm call point should be installed at a height of 1.4m above floor level at easily accessible and conspicuous positions.

We have many varieties of MCP available with different certification.

UV/IR Detectors



Infrared/ Ultraviolet Flame Detector

Voltage: DC24V(20V~28V)
Current: ≤30mA
Detection Distance: ≤25m
Operating Environment: Temperature: -30°C~+60°C; Relative Humidity: ≤95%,
Altitude: <5000m
Explosion-proof Sign: Exib II C T6 GB/DIP A20 TA,T6
Protection Level: IP 66
Dimension (L×W×H): 203mm×127mm×104mm , Thread Dia.7mm
Approval: CCCF

Response Indicator



Wire Entrance Back side of the Component
Alarm Current 10 mA,
LED Lamp 5 m.m
LED Lamp Glow Light colour red
Enclosure Colour White or Off White
Voltage 24v Dc
Mounting Methods in of the Cabinet

Nurse Call System



Nurse call
Communication between the patient and nurses or among staff members ensures rapid and reliable help in all situations.

VoIP Telephony
Remain in touch with the world from your patient bed.

Fire Telephone System

Edwards/ Siemens/ TNA



CONNECT switch selects phone circuits shown in the Calls Pending Window.
REVIEW PENDING stops automatic display of pending calls and allows the operator to step through each message at his own pace.
Acknowledge silences the telephone systems audible signal. The signal sounds for any new call.
DISCONNECT disconnects the highlighted call in the calls connected list.
REVIEW CONNECTED scrolls a reverse highlight through the calls connected list.

PA System

Edwards/ Siemens/ TNA



Ready-to-Page LED turns on after the pre-announce tone has finished indicating the system is ready to page.
All Call selects all amplifiers for page delivery.
Page to EVAC selects all amplifiers currently delivering evacuation signaling for page delivery.
Page to ALERT selects all amplifiers currently delivering alert signaling for page delivery

ENQUIRE NOW

Call us
+91 7020035493
+91 9836838438
glyptic.sales@gmail.com



Viking VK1001 Standard Response Upright Sprinkler

Minimum Operating Pressure: 7 PSI (0.5 bar)
Rated to: cULus - 250 PSI (17.2 bar) WW
 FM, CE, LPCB, and VdS - 175 PSI (12 bar) WWP
 Factory tested hydrostatically to 500 PSI (34.5 bar)
Thread size: 1/2" NPT (15 mm BSPT)
Nominal K-factor: 5.6 U.S. (80.6 metric*)
 Glass-bulb fluid temperature rated to -65 °F (-55 °C)
Sprinkler Body: Brass CW602N, UNS-C84400 or QM Brass
Deflector: Stainless Steel UNS-S30400
Pip Cap Shell - Stainless Steel UNS-S44400
Pip Cap Disc - Stainless Steel UNS-S30100
Belleville Spring - Nickel Alloy
Pip Cap Seal - Polytetrafluoroethylene (PTFE)
Compression Screw: Brass CW612N, CW508L, UNS-C36000 or UNS-C26000
Shipping Cap: Polyethylene
Bulb: Glass, nominal 5 mm diameter



VK1021 STANDARD RESPONSE PENDENT SPRINKLER (K5.6)

Minimum Operating Pressure: 7 PSI (0.5 bar)
Rated to: UL - 250 PSI (17 bar) WWP
 FM, CE, LPCB, and Vds - 175 PSI (12 bar) WWP
 Factory tested hydrostatically to 500 PSI (34.5 bar)
Thread size: 1/2" NPT (15 mm BSPT)
Nominal K-factor: 5.6 U.S. (80.6 metric*)
 Glass-bulb fluid temperature rated to -65 °F (-55 °C)
Sprinkler Body: Brass CW602N, UNS-C84400 or QM Brass
Deflector: Stainless Steel UNS-S30400
Pip Cap Shell - Stainless Steel UNS-S44400
Pip Cap Disc - Stainless Steel UNS-S30100
Belleville Spring - Nickel Alloy
Pip Cap Seal - Polytetrafluoroethylene (PTFE)
Compression Screw: Brass CW612N, CW508L, UNS-C36000 or UNS-C26000
Shipping Cap: Polyethylene
Bulb: Glass, nominal 5 mm diameter



Flexible Sprinkler Hose | Models VK27B (Braided) & VK27N (Unbraided)

Hose diameter 25 mm inner diameter
 27 mm outer diameter
Approvals*
 Inlet size 1"/DN25 or 1-1/4"/DN32 BSP
 (1 1/2" DN25 NPT on request)
 Outlet size 1/2"/DN15 or 3/4"/DN20
 Lengths 700 mm, 1,000 mm, 1,200 mm,
 1,500 mm or 1,800 mm
 Support bar lengths 1,000 mm or 1,500 mm
 Material Stainless steel
Pressure rating
 VK27N: 12 bar (UL), 14 bar (LPCB)
 VK27B: 12 bar (FM), 14 bar (UL & LPCB),
 16 bar (VdS)
 Maximum ambient
 temperature 100 °C (212 °F)
 Application Water based fire-suppression systems



SPRAY NOZZLES VK810 - VK817

Minimum Operating Pressure: 10 psi (0.7 bar)
Maximum Working Pressure: 175 psi (12 bar)
Thread size: 1/2" NPT or 15 mm BSPT
Nominal K-Factor: 7.2 U.S. (103.7 metric*)
 5.6 U.S. (80.6 metric)
 4.1 U.S. (59.0 metric)
 3.2 U.S. (46.1 metric)
 2.3 U.S. (33.1 metric)
 1.8 U.S. (25.9 metric)
 1.2 U.S. (17.3 metric)
Overall Length: 2-7/16" (61 mm)
Material Standards:
Body Casting: Brass UNS-C84400
Splitter: Brass UNS-C36000
Bushing: (for nozzles with 1.2, 1.8, and 2.3 K-Factors): Brass UNS-C36000



360 psi Clean Agent Fire Suppression Systems

- Reduces risk of downtime and helps maintain business continuity in the event of a fire.
- Clean, leave behind no residue.
- Safe for discharge into occupied spaces.
- Cost effective engineered system, providing maximum protection.
- Tested and approved with all of Kidde's various detection and control options.
- Sustainable technology providing an environmentally-conscious solution
- Engineered system providing a fast acting discharge in seconds
- Offers fully-developed, flexible design limits to fit any application environment
- Easy to design using our engineered series software

UL Listed
 ULC Listed
 FM Approved
 USCG Approved
 MEA Listed



Sinorix 1230 (EN)

System: 42-bar technology with a nozzle pressure of 10 bar
Application: Equally effective for fires of class A and B
Approvals/standards:
 - System approvals: VdS, CNPP
 - System standards: ISO 14520-1, EN 15004, EN 12094
 - Software: VdS
 - Agent: VdS, LPCB, FM-UL, APSAD, NFPA 2001, ISO 14520-5
 Positively tested, rated, and approved by various international organizations (Gelsenkirchen Hygiene Institut, U.S. Environmental Protection Agency, etc.)
Extinguishing agent: 3M™ Novec™ 1230 Fire Protection Fluid
Agent characteristics: Liquid at atmospheric pressure, colorless, odorless
Environmental regulations:
 - Not restricted by F-Gas Regulation
 - Not part of the Kyoto Protocol
GWP (global warming potential): 1
ALT (atmospheric lifetime): 3 – 5 days
NOAEL (no observable adverse effect level): 10%

Aerosol Fire Extinguishing Systems



- Name of model: 1500E.
- Capacity: 1500 aerosol covering up to 15 cubic meters.
- Activation mode: electric, electronic, electrical operated.
- Size of Product: Ø218*204 mm.
- Releasing time: 15 to 19 seconds.
- Device weight: 8400 grams.
- Environment temperature: -40°C to +108°C.
- Relative humidity: up to 95% at temperature of 20°C.
- Cylinder's surface temperature: less than 100°C.
- Cylinder's nozzle temperature: less than 200°C.
- Life span of aerosol agent: 10 years.

Standalone Aerosol Fire Extinguishing Units



- Exceptional effective non-toxic fire suppressing agent
- Does not deplete oxygen levels
- SNAP listing by EPA
- Ecologically safe and environmentally friendly (ODP = 0, no GWP)
- Is harmless to humans and animals
- Does not cause any overpressure



Access Control Systems

We provide top-of-the-range Bluetooth, RFID-based, and fingerprint-based biometric attendance management systems and access control solutions in the industry.

LHS Cables



UL Listed. Environment Friendly Construction. Earliest Detection at Alarm temperature. Compatible with most existing Monitors and Control Equipment. Configurable for Intrinsically Safe Hazardous Areas

Various Range LHS Cables:
 Alarm Temperature:
 68 Degree
 78 Degree
 88 Degree
 90 Degree
 110 Degree
 138 Degree

ENQUIRE NOW

Call us
 +91 7020035493
 +91 9836838438
 glyptic.sales@gmail.com

“

We believe to give real support partners must add something which cannot be bought or measured with money, and that is Sincerity & Integrity.”

Why Choose us:



Pricing
Best and most competitive price



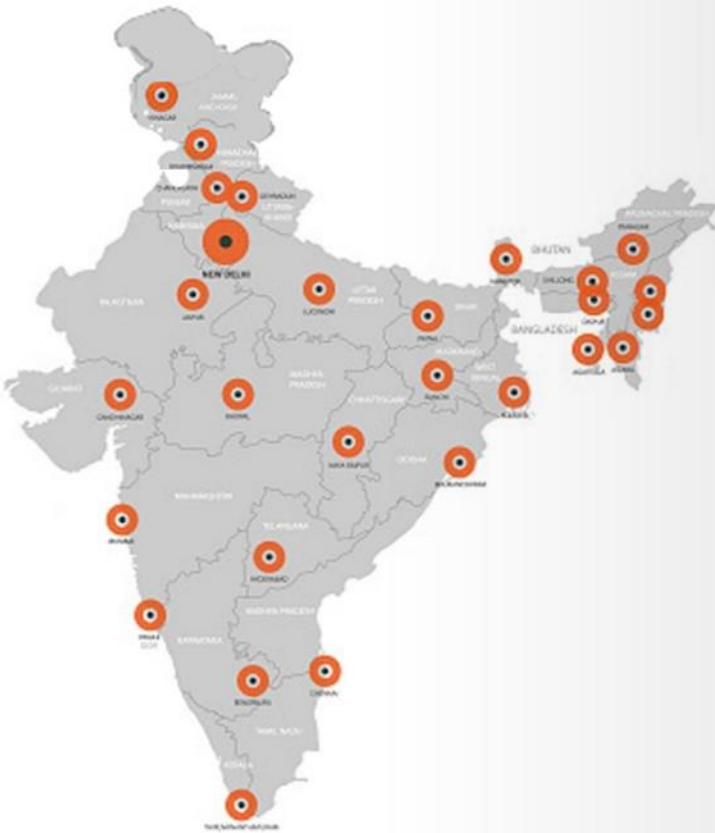
Product Range
Wide range of products at single basket



Delivery
Faster, safe and On or before time delivery



Technical Competency
Hands on technical supports to our partner irrespective of brands and models



Our Valuable Customers:





To Successfully move forward in 2023, we have implemented four main ideas of **Crisis of Supply** management of Fire Alarm, Detection & Suppression system, **Pricing Factor** the best & most competitive, **Single Basket of Product** line assure irrespective **Makes & Models** and **Technical Support** that enrich competency & confidence of Partner.

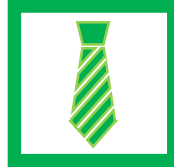
GLYPTIC's primary Goal to grow with customer assuring customer's peace of mind by saving lose people and properties from Fire with commercial benefits.

Continuous improvement of business by innovative ideas of Fire Detection, Prevention and Protection System such as Cord, Sticker, Aerosol, Tube Based Suppression system

CONTACT US



Registered Office: Raipur Bhita, Burdwan – 713102. West Bengal India.



Business Address
1363, Naskarhat, Madhyapara, Kolkata-700039.



Telephone: 033 29725520
9836838438 /
9734186863 /9831688742



Email & Website:
Glyptic.sales@gmail.com
www.glyptic.in

